

Ramps – How to reduce slips, trips and falls

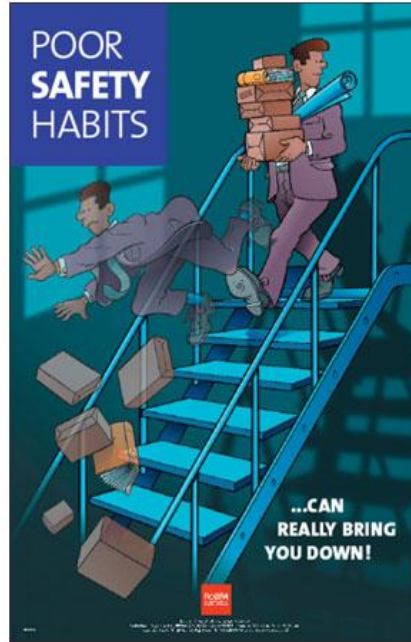
- Installing non-slip edge guard on steps.
- Providing non-slip surface or tread.
- Providing appropriate handrails, and edge rails.
- Do not rely on footwear as a sole solution to preventing slips, trips and falls.
- Sign Postings: The more safety signs that are posted, the more the employee or passengers become sub-consciously aware of the dangers.



Trips occur when your foot collides (striking or hitting) an object, causing you to lose your balance.

However the only guaranteed way to prevent slips, trips and falls is you...

Most Slips, Trips and Falls are a direct result of you not
PAYING ATTENTION TO THE
“TASK AT HAND”



Remember!

- Good workplace habits, like excellent house cleaning. Keep the work area clean.
- Good workplace communications. Consistent training keeps everyone aware of the number one cause of injuries; slips, trips and falls.

Safety is not just a word it is a “Physical Action”

Associated Carrier Industry of California
866-955-0637
2398 Fair Oaks Blvd. Suite 1A
Sacramento, CA 95825
www.associatedcarrierindustryofcalifornia.com



Preventing Slips, Trips and Falls in the Workplace



Do Not Become Another
OSHA Injury Statistic.
**Think Safety Before
You Act!!!**
It's Your Responsibility

Defining Slips, Trips & Falls

Slips trips and falls are among the most common accidents in the limousine and bus service industry.

Next to traffic accidents, falls kill more people than any other kind of accident. Two of the most common causes of slips, trips and falls are slippery walking surfaces, uneven walking surfaces, heaved-up concrete, cracks, deteriorated or missing stair treads as well as not paying attention to where you are going.

- Wear appropriate footwear.
- Wear slip resistant footwear during rainy days, ice and possible snow conditions .



- Keep front steps or entrance doors free from debris, dirt and in the winter mud, snow or ice.
- Use handrail when entering the bus or limousine.

- Use 3-point entrance or dismount procedure in/out of limousines or buses.
- 3-Points entrance or dismount means; three points of the body are touching at all times i.e., 2 hands & 1 foot.
- When washing windows, watch out for slippery spots.



- Use a ladder that is secured instead of climbing on the vehicle to wash the window.
- Prior to picking up luggage to stow in the vehicle, ensure you are on even ground and well balanced.
- Do not attempt to swing luggage into the storage compartment or vehicle trunk. You may lose your balance.
- Get assistance if the luggage is too heavy or awkward to lift.
- When assisting passengers with disabilities, make sure you have secure footing, balance and control.



Other indicators of slips, trips and falls in the Limousine and Bus Service Industry.....

- Items left in the aisle way of the bus.



- Food or drink spilled on the floor or aisle way.



- Protruding objects from the seats, and/or passengers.



- Paying attention to yourself, not them!



Safety is our business, so please call us anytime. Our safety consultants are ready and willing to provide you with real time solutions in keeping you and your associates safe in the workplace.

1-866-955-0637